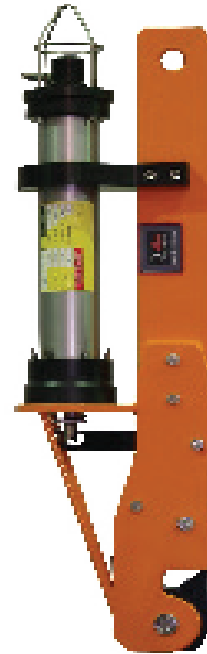


Acoustic 15t Release Hook ARH - 2.0

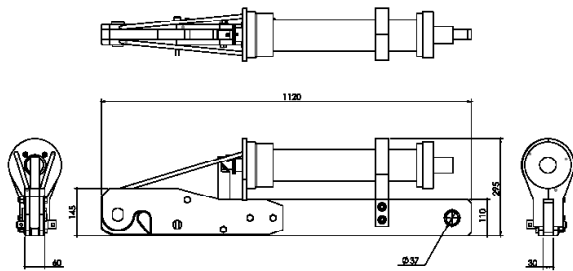
The 15t Release Hook offers a new method of wirelessly separating an underwater load from its crane. By using acoustics, rather than divers or ROVs with cutting equipment, this method has the potential to both reduce risk and save time.

The Release Hook consists of a heavy duty strong back and lever system that amplifies the load capability of an Applied Acoustics' 529P Release beacon, and a standard AAE surface control unit, typically a 3510 PAM Portable. Once the load is in position a remote acoustic signal received from the surface unit triggers the hinged hook to open, releasing the load, allowing the frame unit itself to be recovered in its entirety for reuse.

Useful for bight release applications in the cable laying and repair industry, this acoustic Release Hook is also suited for coastal construction operations on wind farm sites, lowering work baskets or other subsea structures, separating lift bags from their loads or as a method of marking subsea infrastructures that are at risk of damage from surface activity.



Dimensional Data



Features:

- 15 tonne release capability
- Commanded by 3510 PAM or 2520 PAM, Easytrak Lite or Nexus USBL
- Positive lever drive off with load assist release
- Upgrade option for existing 529P beacons

Applications:

- Cable work operations
- Crane and winch wire detachment
- Submerged buoy recovery
- Complementary to lift bag operations

Specification

Part number: 0001 - 1117

HOOK SPECIFICATION:

WLL	15t (including 4 x factor of safety)
Operating depth	1000m
Weight in air	27kg
Weight in water	18kg
Overall length	1120mms
Maximum height (inc cage)	1200mms
Master link part number	Gunnebo M-1613-10

529P ACOUSTIC RELEASE BEACON

Housing material; hard anodised aluminium.

BATTERY

Type	Alkaline (Set of 3; Rx, Tx, Motor)
Listening life	4 months
Releases	70

TWO-WAY COMMUNICATION

Frequency	MF, 17 to 32kHz
Status telemetry	Acknowledge arm, Acknowledge release, Battery
Commands	Arm, Release, Battery Status, ID Commands, Tilt

COMPATIBILITY AND CONFIGURATION

Internally configured Command/Control 16 identities

TOPSIDE CONTROL 3510 PAM PORTABLE

Case size	390 x 310 x 170mm	
Weight	5lbs	
Temperature	Storage	-20°C to +60°C
	Operation	0°C to +40°C
External power supply	Input	100-240Vac, 50-60Hz
	Output	24Vdc
Battery life	6 hours	

3190 DUNKING TRANSDUCER

Robust stainless steel transducer with integral cable and transducer protection cage. Operation subsea with ranging, relocation, acoustic release and telemetry.

Size	100mm Ø x 276.5mm excluding cable relief
Weight	8.5lbs
Cable length (attached)	30m standard
Depth rating	50m

COMPATIBILITY

3510 PAM Portable, 2520 PAM Easytrak Lite Easytrak Nexus